



## Flat 6

Kensington Gardens Square, 32-33 | | London | W2 4BG

£ 2,600 Per Month

 cityrelay

# Flat 6

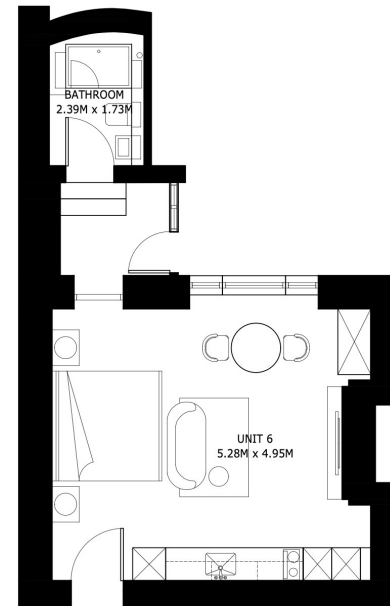
Kensington Gardens Square, 32-33

London | W2 4BG

Welcome to this beautifully designed contemporary studio apartment, ideally positioned in the heart of Bayswater, just moments from Notting Hill and the open green spaces of Kensington Gardens.



- Stylish contemporary studio apartment
- Quiet lower ground floor position
- Elegant bathroom with spacious walk-in shower
- Prime Bayswater location
- Contemporary open-plan living space
- High-specification finishes throughout



## UNIT 6

LOWER GROUND FLOOR STUDIO (KING) WITH KITCHEN  
GROSS INTERNAL AREA = 33.33 SQ.M.

\*SIZES AND DIMENSIONS ARE APPROXIMATE, ACTUAL MAY VARY.

Energy Efficiency Rating		Current	Potential
<i>Very energy efficient - lower running costs</i>			
(92 plus)	A		
(81-91)	B		
(69-80)	C		
(55-68)	D	69	78
(39-54)	E		
(21-38)	F		
(1-20)	G		
<i>Not energy efficient - higher running costs</i>			
England & Wales		EU Directive 2002/91/EC	

Council Tax Band **New**  
Build  
EPC Rating **C**

10 Cromwell Place  
London  
SW7 2JN

02038 650611  
lettings@cityrelay.com